

# NOBBE ORTHOPEDICS, INC.

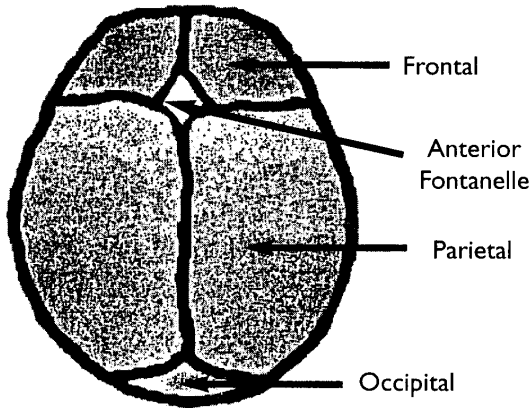
3010 State Street  
Santa Barbara, CA  
93105  
(805) 687-7508 tel  
(805) 687-6251 fax  
www.nobbeorthopedics.com

203 East Fesler  
Santa Maria, CA  
93454  
(805) 925-8290  
(805) 346-8713

## Cranial Anatomy (For Practitioner's Reference)

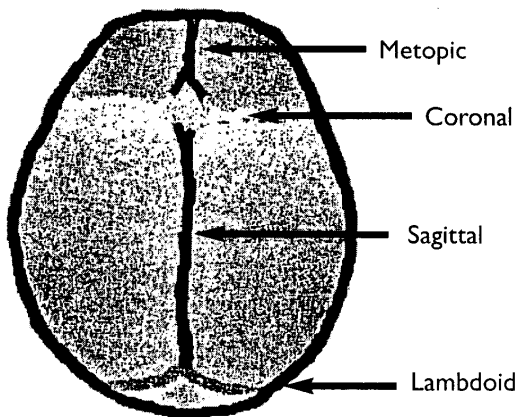
The diagrams that follow are meant as a simplification of the complex arrangement of an infant's skull bones. In all pictures the viewpoint is from the top of the head facing down, what is known as "bird's eye view". The front of the head is the top of the picture and the back of the head is the bottom of the picture.

### Basic Anatomy



### Bone Plates

Viewed from above, you can see five major plates of bone: the paired frontal and parietal bones and the single occipital bone. The corner where the two frontal and the two parietal bone plates meet is the anterior fontanelle, known as the "soft spot". Not shown is a somewhat smaller posterior fontanelle at the junction of the two parietal bones plates and the occipital bone. These fontanelles close during the first year or two of life. The timing of the closure can be quite variable.



### Sutures

The major sutures can be identified from a similar "bird's eye view". The two frontal bone plates meet at the metopic suture. Each frontal one plate meets with a parietal bone plate at the coronal suture. The large paired parietal bone plates meet at the sagittal suture. Finally, each parietal bone plate meets the occipital bone plate at the lambdoidal suture.

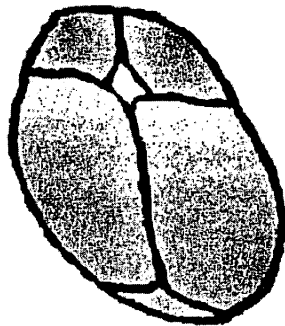
# NOBBE ORTHOPEDICS, INC.

3010 State Street  
Santa Barbara, CA  
93105  
(805) 687-7508 tel  
(805) 687-6251 fax  
www.nobbeorthopedics.com

203 East Fesler  
Santa Maria, CA  
93454  
(805) 925-8290  
(805) 346-8713

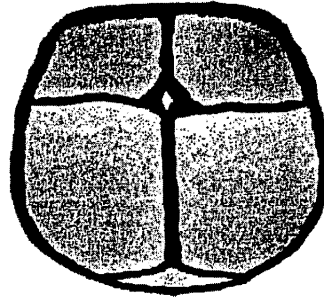
## Cranial Anatomy, continued (For Practitioner's Reference)

### Head Shapes Most Likely to Benefit From The STARband™



**Positional Plagiocephaly**

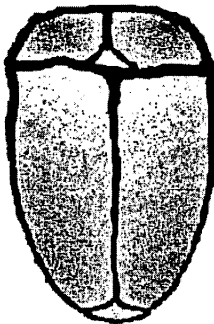
Plagiocephaly describes the asymmetry of the head that resembles a parallelogram when viewed from the top. The diagram depicts a typical plagiocephalic head shape which results from abnormal head growth.



**Brachycephaly**

Brachycephalic-shaped heads tend to be short and wide, often with a reverse inclination of the forehead. The diagram depicts a typical brachycephalic head shape which results from abnormal head growth.

### Head Shapes NOT Likely to Benefit From The STARband™



Also known as  
**Scaphocephaly** or  
**Dolichocephaly**